



LSH KÉSZHÁZ

LAPRASZERELT HÁZAK

Dear Customer!

Thank you for entrusting us with building your home! We sincerely hope that after reading the following lines, your trust will be even further strengthened.

In the following lines you will find the key information you need about the modular construction technology of LSH Houses.

LSH Prefabricated Houses

LSH Prefabricated Houses are the result of 15 years of professional experience.

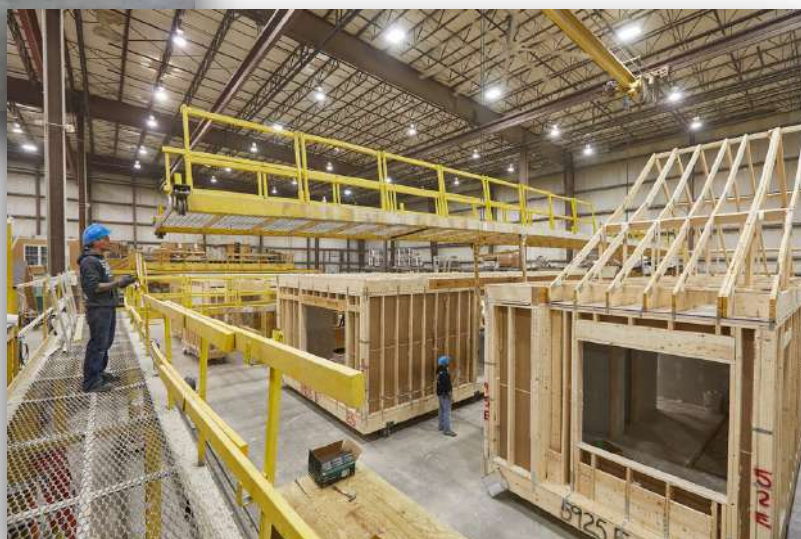
Residential buildings designed and manufactured using modular methodology require particular care and attention from the design stage, as the house and its structure must be designed in such a way that it is not only modularly manufacturable but also transportable by road, which is why we recommend that you work with us from the outset to have the architectural and structural plans drawn up.

Once designed, we will manufacture and build the modules of the designed residential building in our manufacturing facility under strict quality standards, where, in addition to the structural and mechanical elements, we will also provide everything from the final wall/floor tiling and painting through to the external insulation and internal plasterboard cladding.



It is crucial we know the location of the final installation, as we need to be aware at the planning stage of any size or weight limits which may impact the transport of the house; these dimensions will also be a key factor in determining the crane installation.

A further critical condition at the design stage is the statics of the house. These not only have to be analysed once the house is in-situ but since the houses are moved and transported between the production site and the final site, we also have to consider the dynamic forces that will be generated then.



Transport is carried out by a low-floor truck trailer and lifting always requires a crane. In many cases, the house and slab itself are manufactured and built as a single unit, and the roof is delivered in a second stage. The reason for this is that in many cases the roof would make the delivery too high, or the intersection of the complex roof structures may not coincide with the intersection of the main walls and supporting walls.

Our modular houses are lifted into their final position and the modules are permanently joined at the connection points, resulting in a single structure. Of course, this also means that we will have to do a small amount of plaster boarding and painting at the connection points.

If the roof is delivered separately, it can be delivered in modules, with the cladding, or as a framed structure with nailing boards and



covered on site.

If available, the insulation and the final covering of the façade are applied at the time of manufacture and are simply assembled on site with the connection of the modules.

Our modular houses are designed for concrete foundations but are also compatible with ground screws and other foundation systems.

For a design consultation or a personal meeting, please do not hesitate to contact us!

